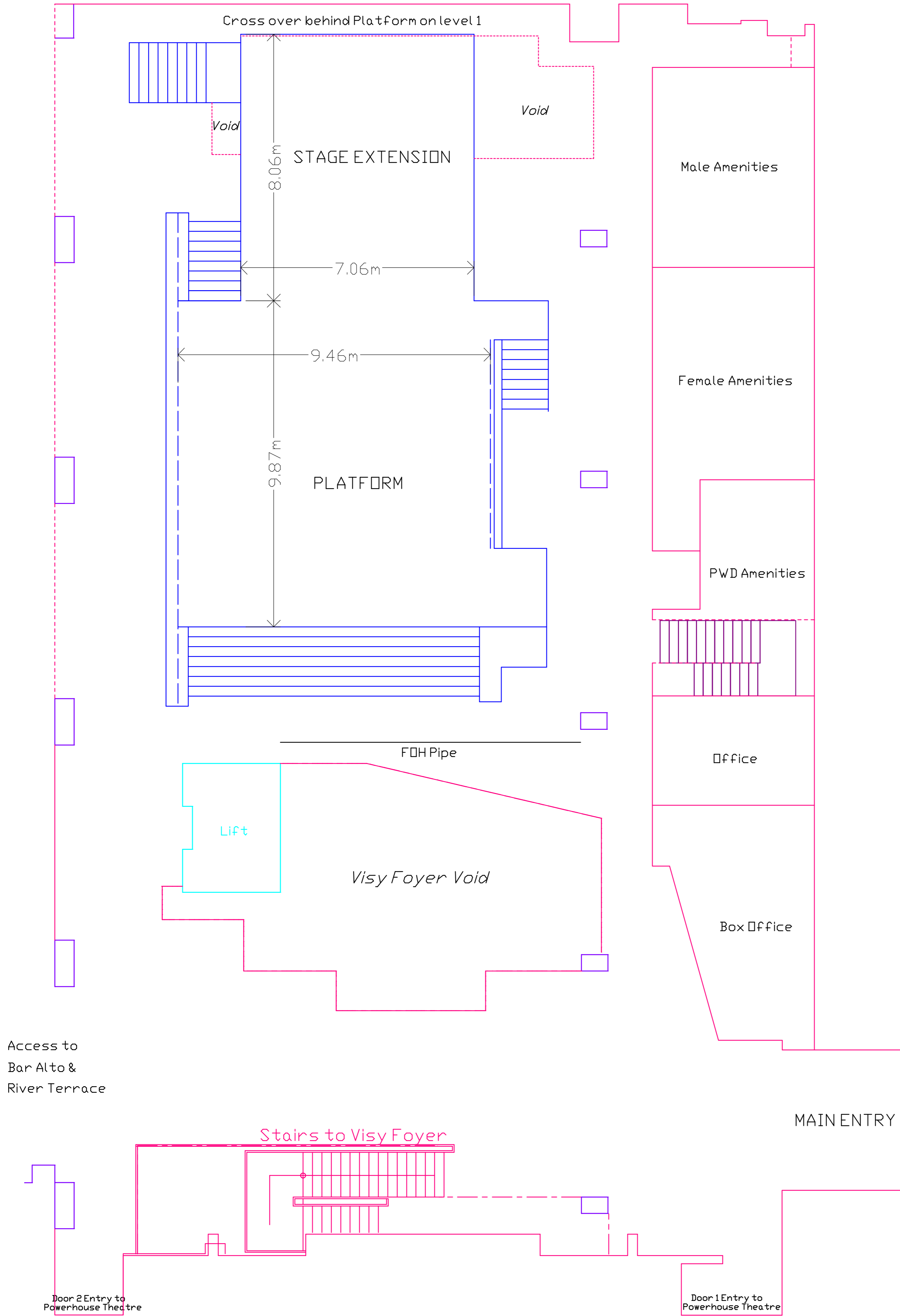
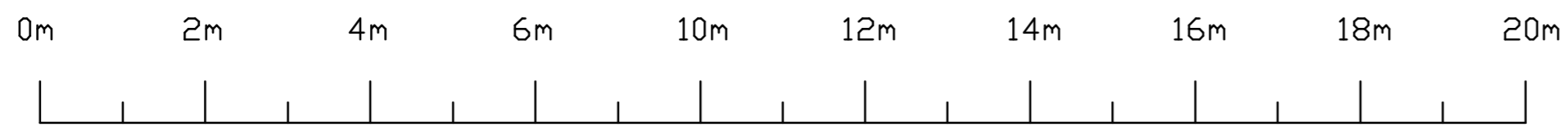


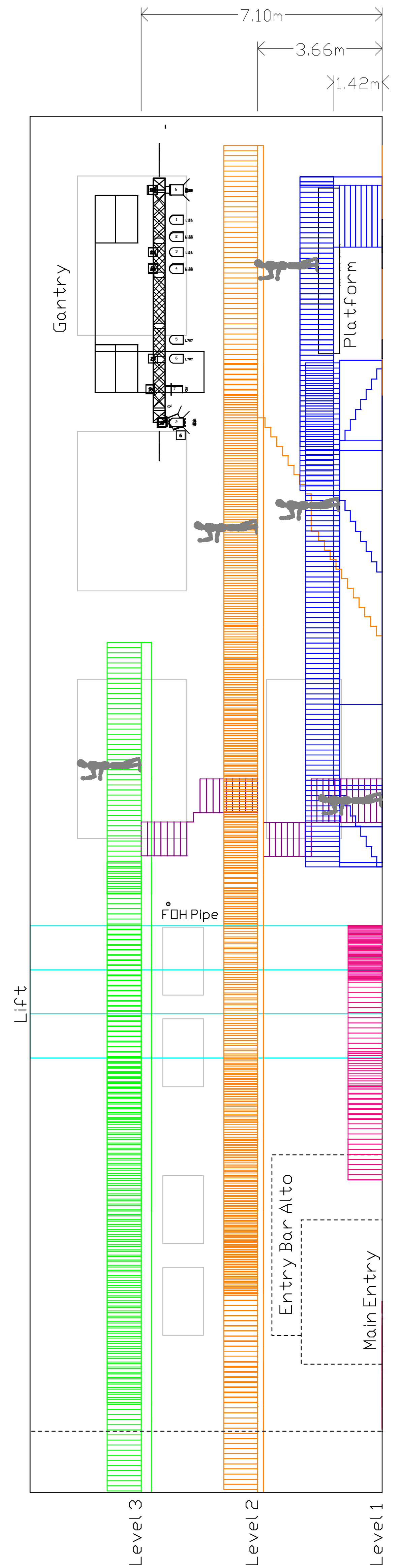
Turbine Hall Floor Plan - Level 1

Scale 1:75



Section

Scale 1:75

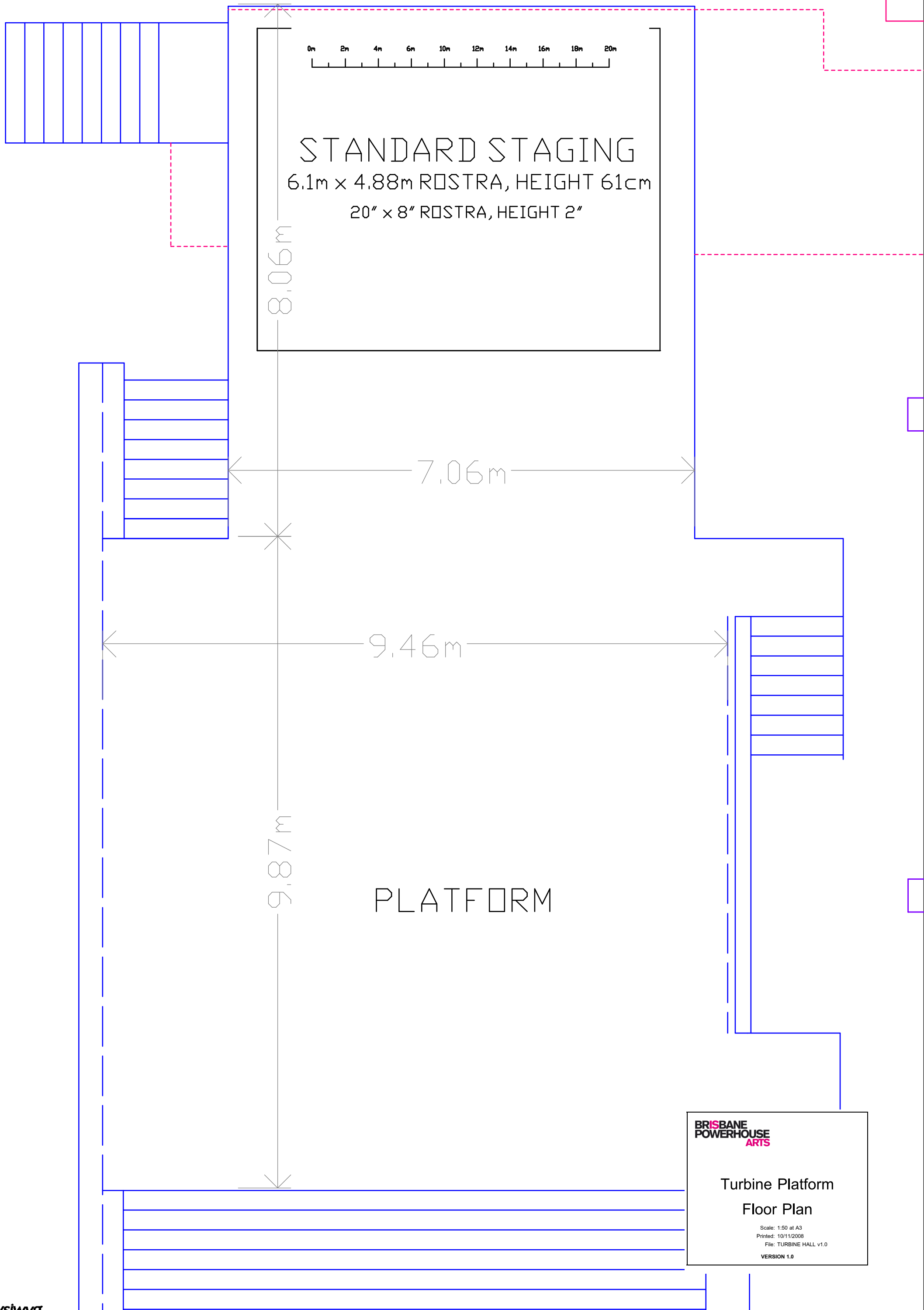


**BRISBANE
POWERHOUSE
ARTS**

Turbine Hall Venue Plans - Level 1 With Section

Scale: Scale correct at A1
Printed: 10/11/2008
File: TURBINE HALL v1.0
VERSION 1.0

Cross over behind Platform on level 1



0m 2m 4m 6m 10m 12m 14m 16m 18m 20m

STANDARD STAGING
6.1m x 4.88m ROSTRA, HEIGHT 61cm
20" x 8" ROSTRA, HEIGHT 2"

8.06m

7.06m

9.46m

9.87m

PLATFORM

**BRISBANE
POWERHOUSE
ARTS**

Turbine Platform
Floor Plan

Scale: 1:50 at A3
Printed: 10/11/2008
File: TURBINE HALL v1.0
VERSION 1.0

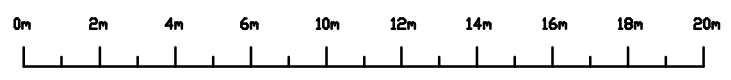
STANDARD STAGING
6.1m x 4.88m ROSTRA, HEIGHT 61cm
20' x 8' ROSTRA, HEIGHT 2'

Masking for Intimate Mode

Masking for Intimate Mode

Lift

Stairs to Visy Foyer

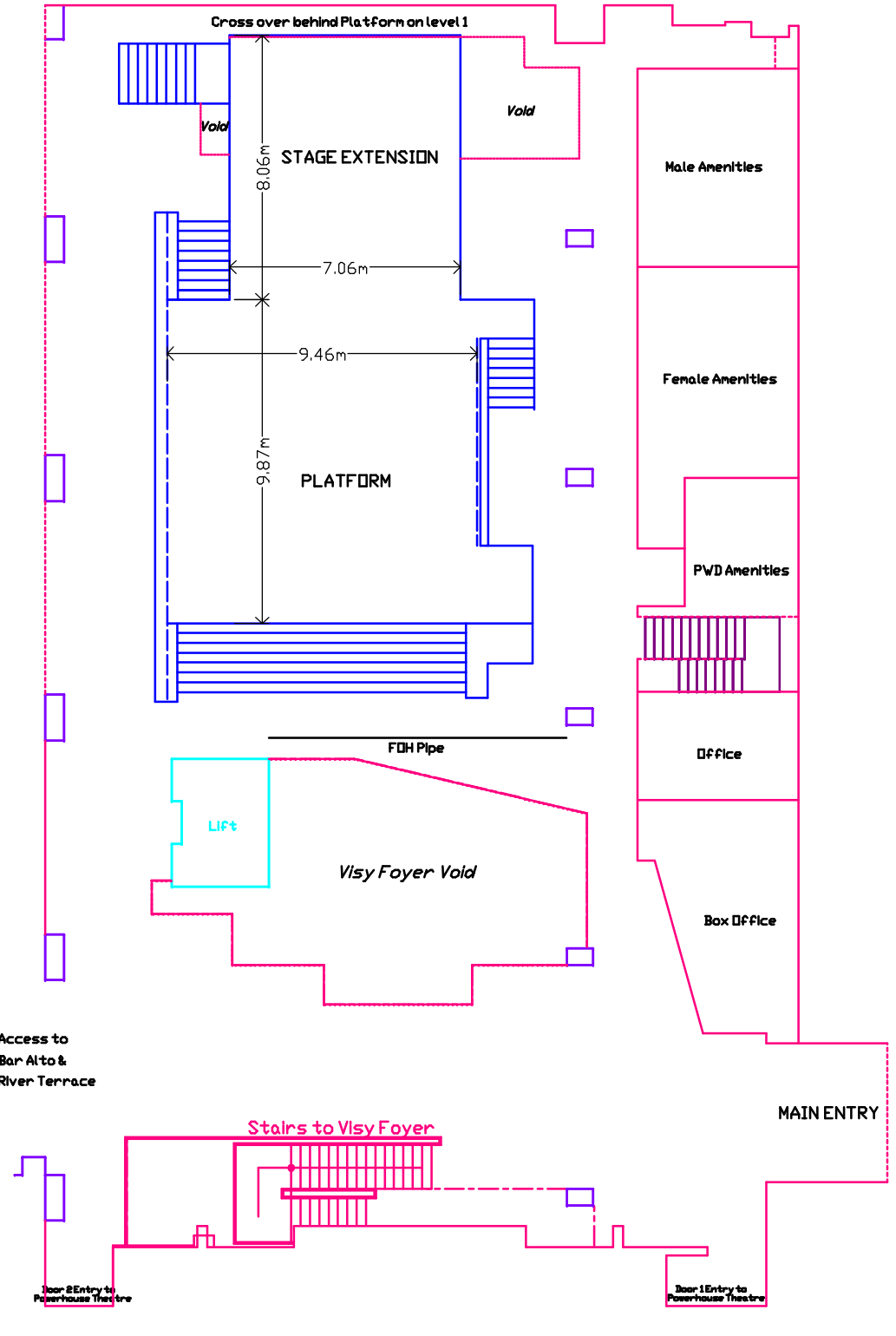


BRISBANE POWERHOUSE ARTS

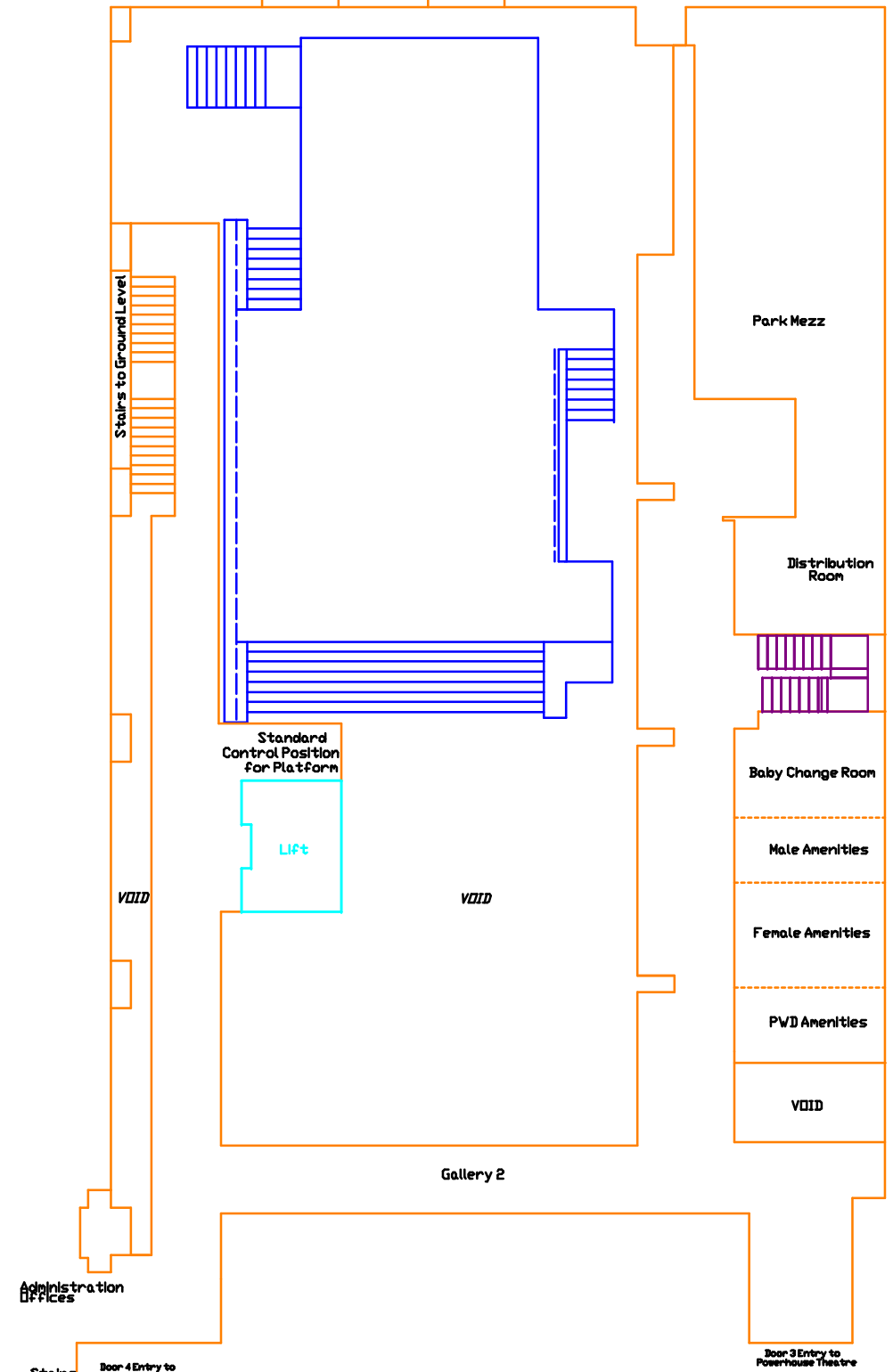
Turbine Hall Floor Plan

Scale: 1:100 at A3
Printed: 10/11/2008
File: TURBINE HALL v1.0
VERSION 1.0

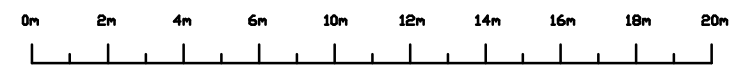
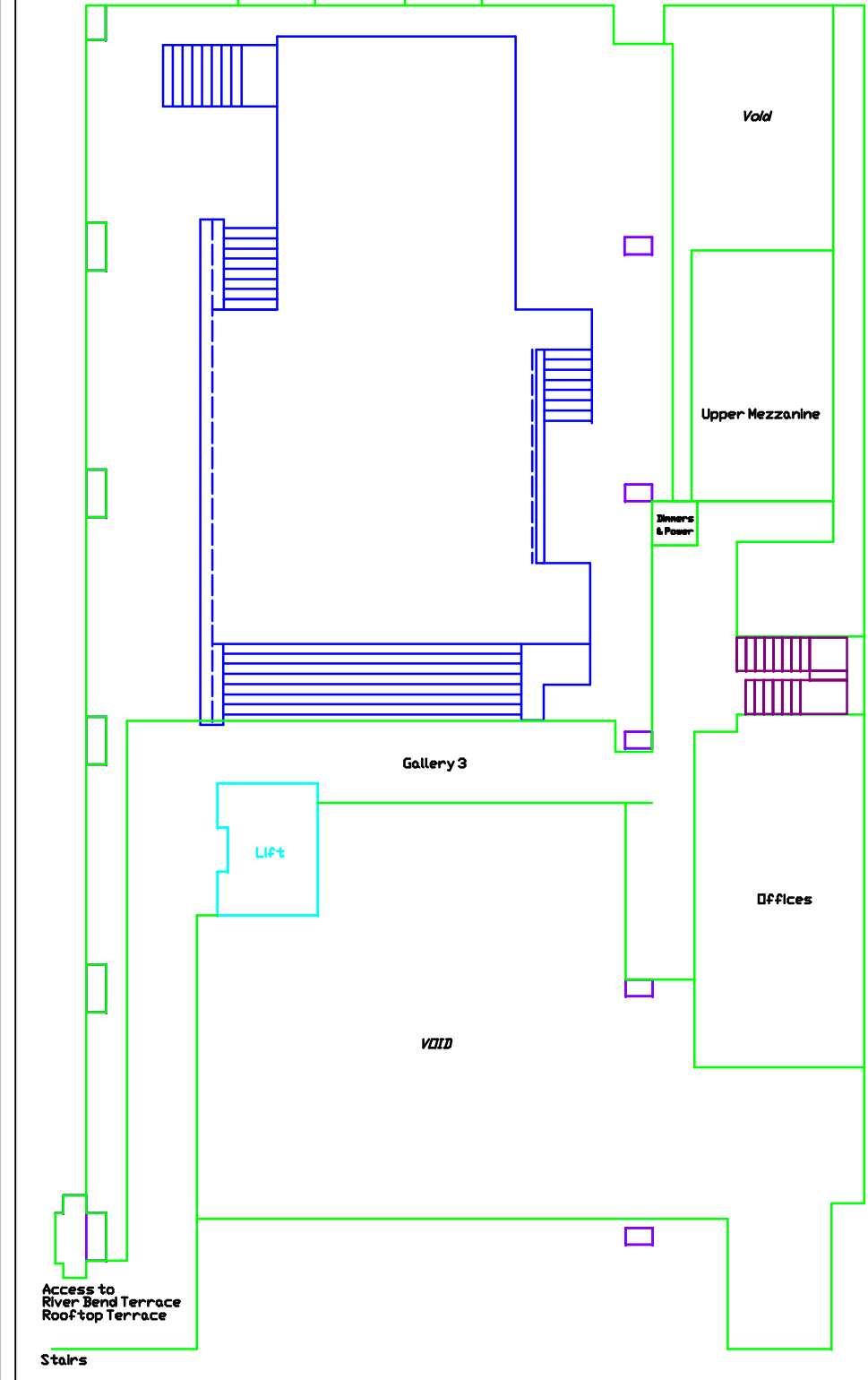
Level 1



Level 2



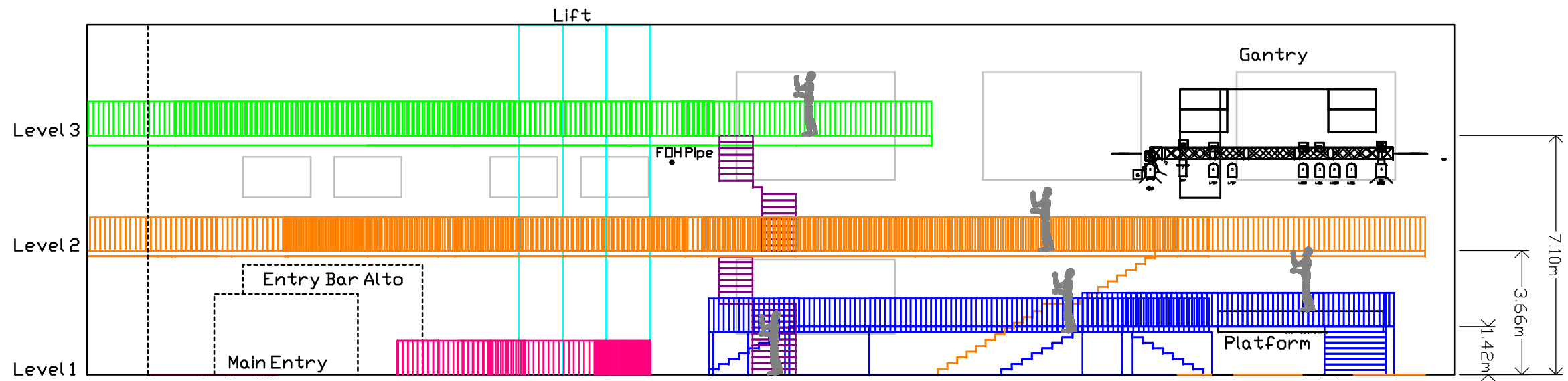
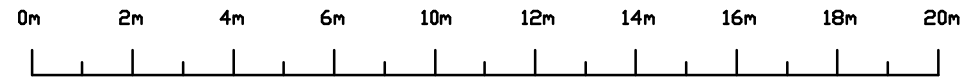
Level 3



BRISBANE POWERHOUSE ARTS

Turbine Hall
Levels 1, 2 and 3

Scale: 1:200 at A3
Printed: 10/11/2008
File: TURBINE HALL v1.0
VERSION 1.0



**BRISBANE
POWERHOUSE
ARTS**

**Turbine Hall
Section**

Scale: 1:150 at A3
 Printed: 10/11/2008
 File: TURBINE HALL v1.0
 VERSION 1.0