

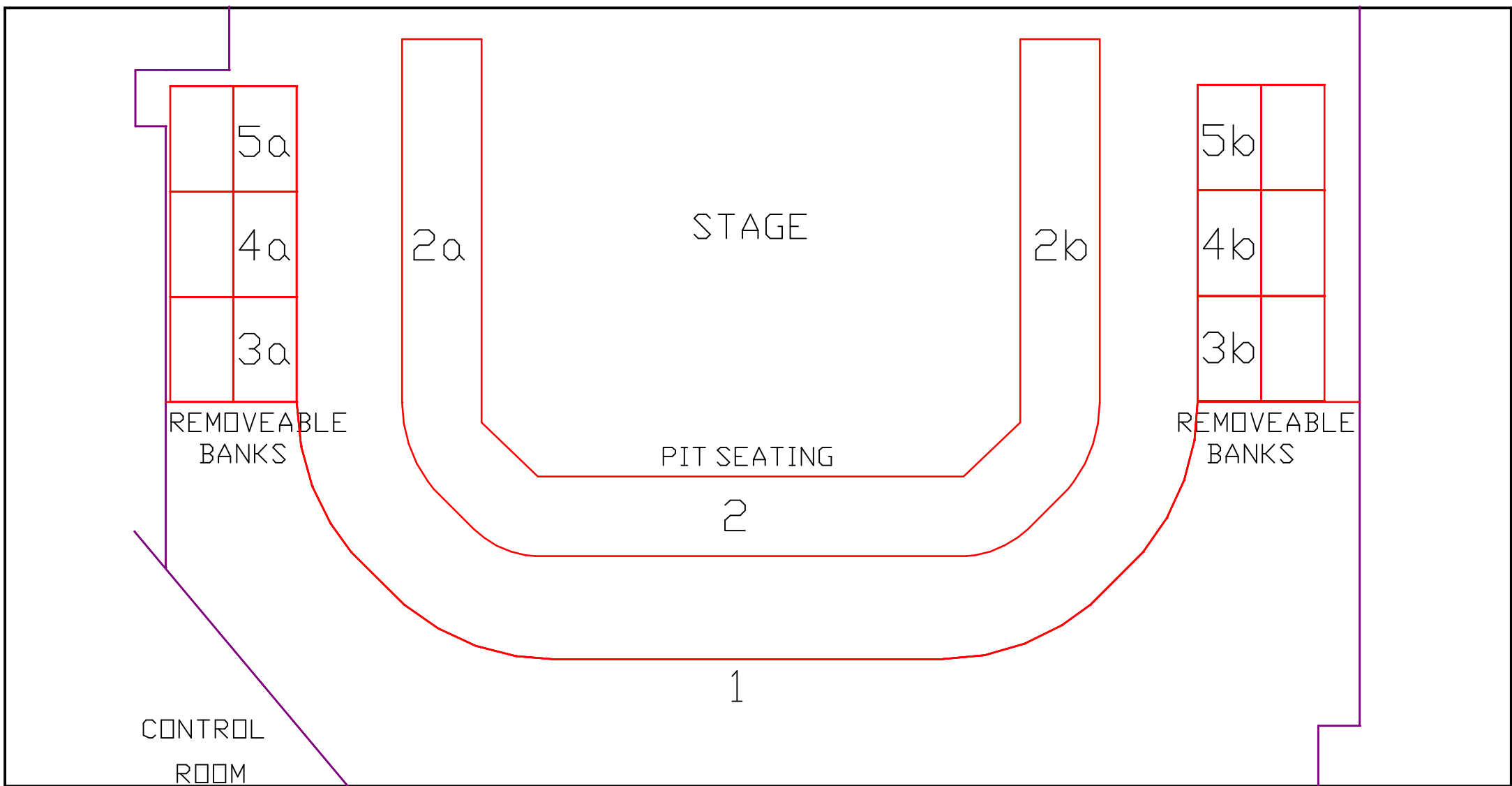
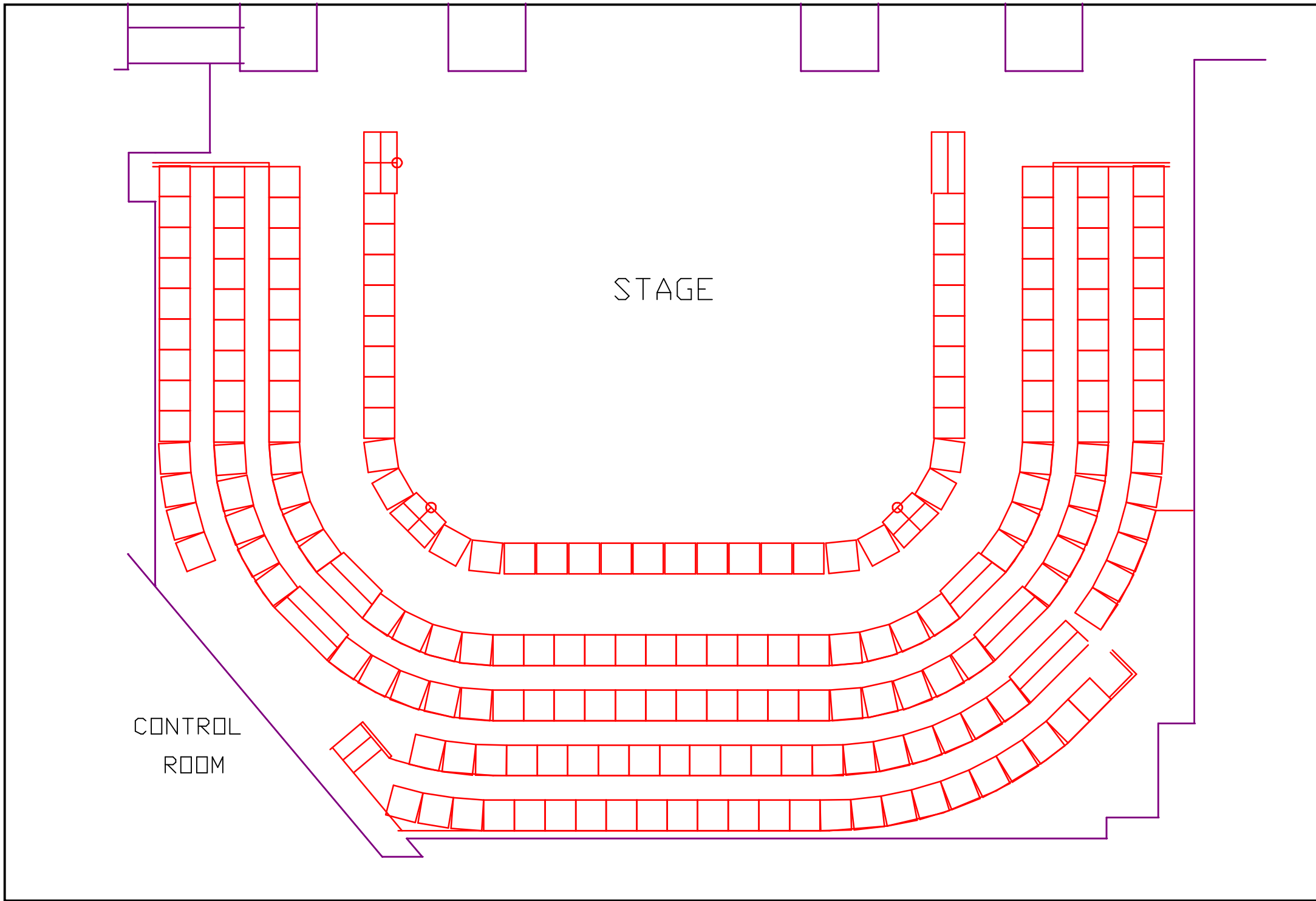
BRISBANE POWERHOUSE ARTS

Visy Theatre

Floor Plan - Detailed

Scale: 1:75 @ A3
 Printed: 3/10/2008
 File: VISY THEATRE v1

VERSION 1.0



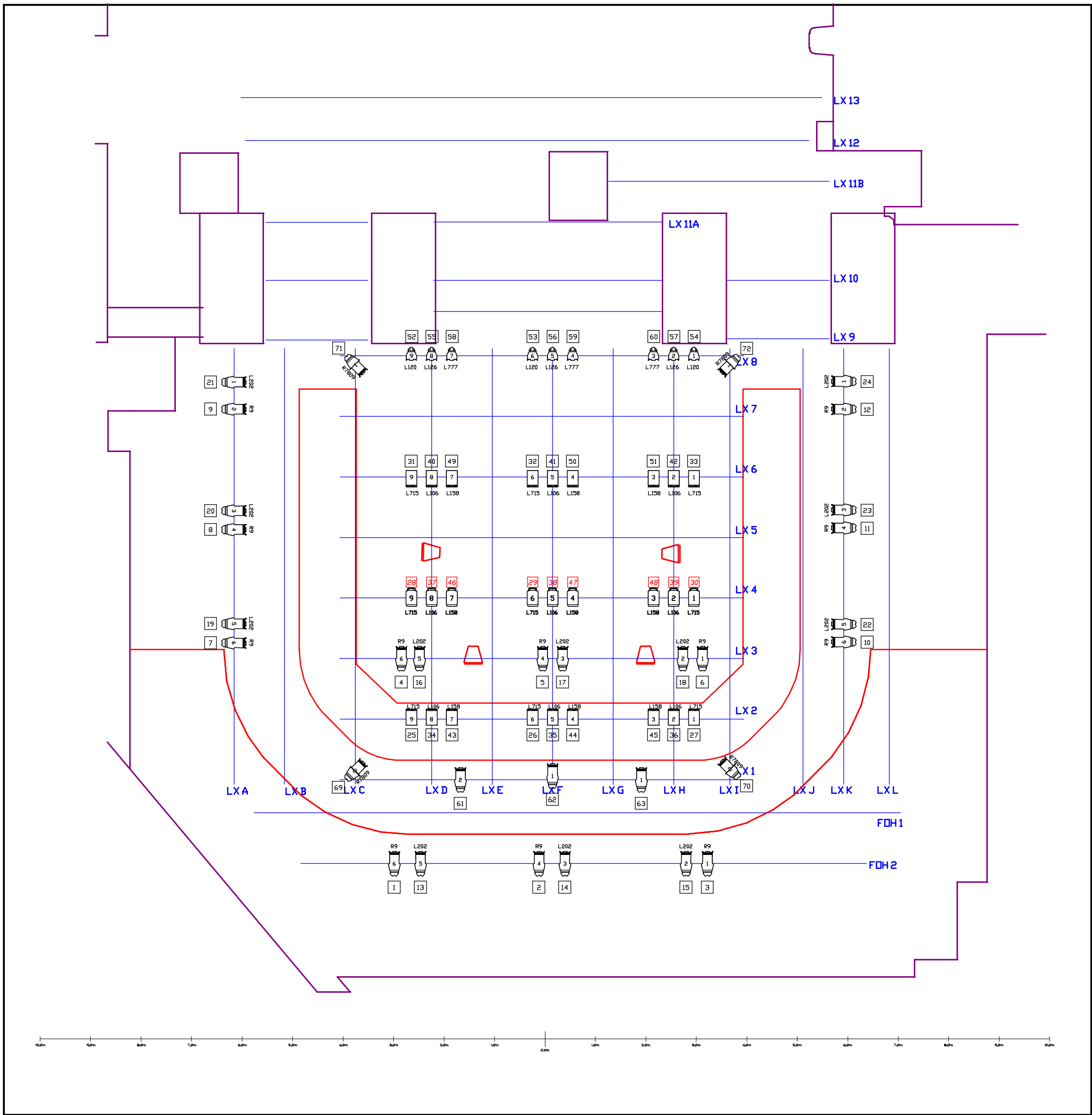
Seating Configurations		
Type	Bank	Quantity
Permanent Seating	1	112
Pit Seating, Centre	2	14
Pit Seating, Sides	2a & 2b	10 per side
Removeable Seating	3a - 5a	9 per section
Total Seats	1 - 5.	200

**BRISBANE
POWERHOUSE
ARTS**

Visy Theatre Seating Plan

Scale: 1:75 @ A3
Printed: 3/10/2008
File: VISY THEATRE v1

VERSION 1.0



LEGEND

Symbol	Name
	Source 4jr 25/50
	Source 4 Par WFL
	Sel 1200 Fresnel

KEY



NOTES:

- All Fresnels have barndoors.
- Lighting console is Strand 300 48/96.
- ETC Pars available with VNSP, NSP, MFL or WFL lens.
- Speakers are Meyer UPA-1P's hung from grid.
- Rear stage bars (LX 9 - LX 13) do not have patch outlets.

LIGHTING BAR HEIGHTS

LX 1 - 8	@	4.75m
LX 9 - 13	@	3.4m
LX A & K	@	4.0m
LX B & J	@	4.5m
LX C - I	@	4.75m
LX L	@	3.4m

Instrument Count

Type	Lens	Count
1200 High Performance Fresnel		18
185 x 190mm Colour Frame		9
185mm Colour Frame		18
6.25" Colour Frame		24
7.5" Colour Frame		9
CE Source 4 Jr - 25/50 Zoom		31
CE Source 4 Par	WFL	9
M Size Gobo Holder		4
Rama 150 Fresnel		9

For grid and rigging point load information please refer to venue technical specifications.

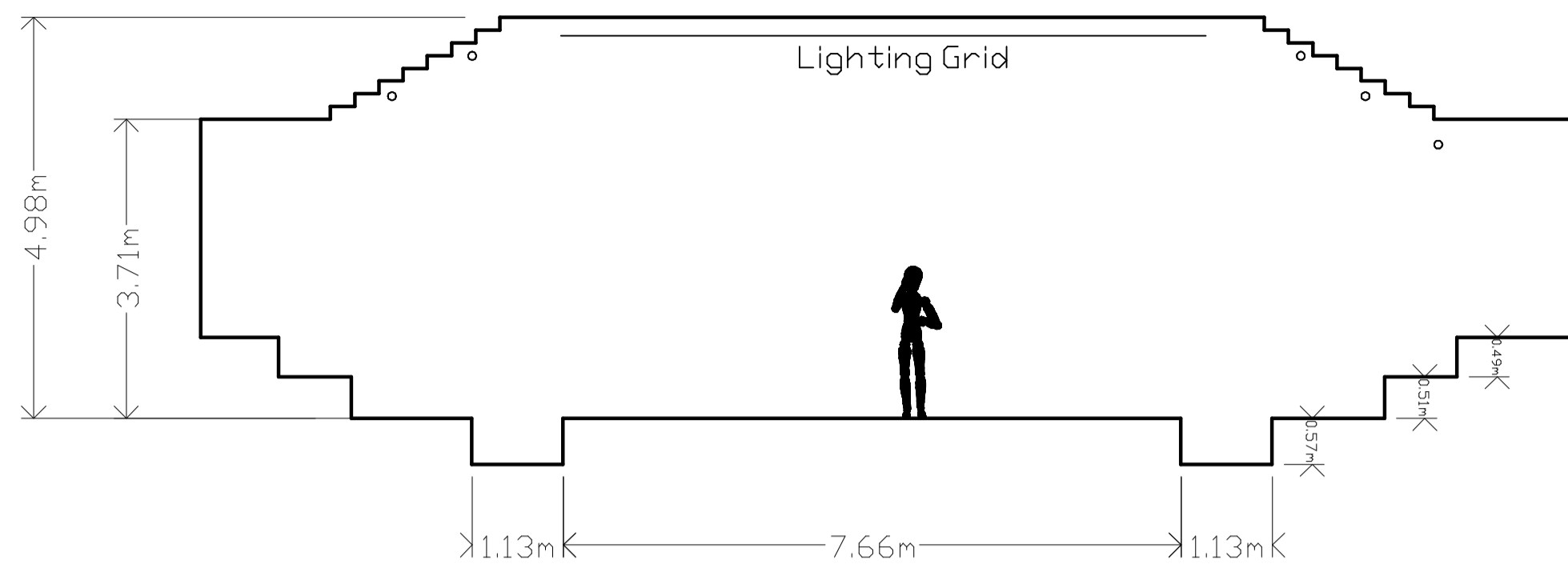
**BRISBANE
POWERHOUSE
ARTS**

**Visy Theatre
Square 1 Lightin**

Scale: 1:75 @ A3
Printed: 18/9/2009
File: VISY THEATRE v2.1w
VERSION 1.0

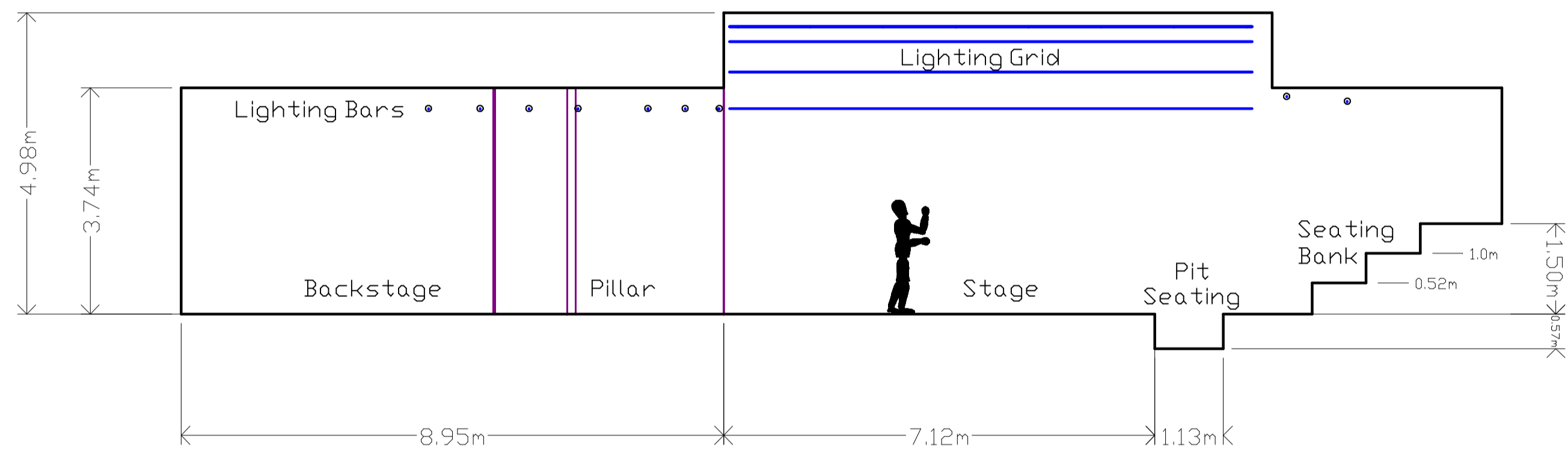
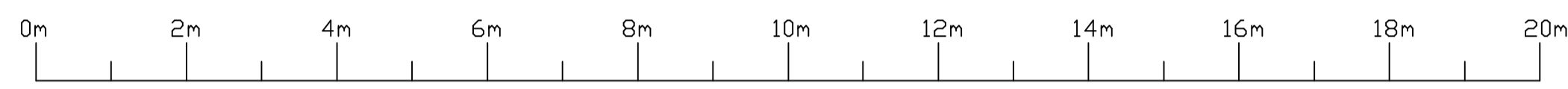
ELEVATION

Scale 1:75



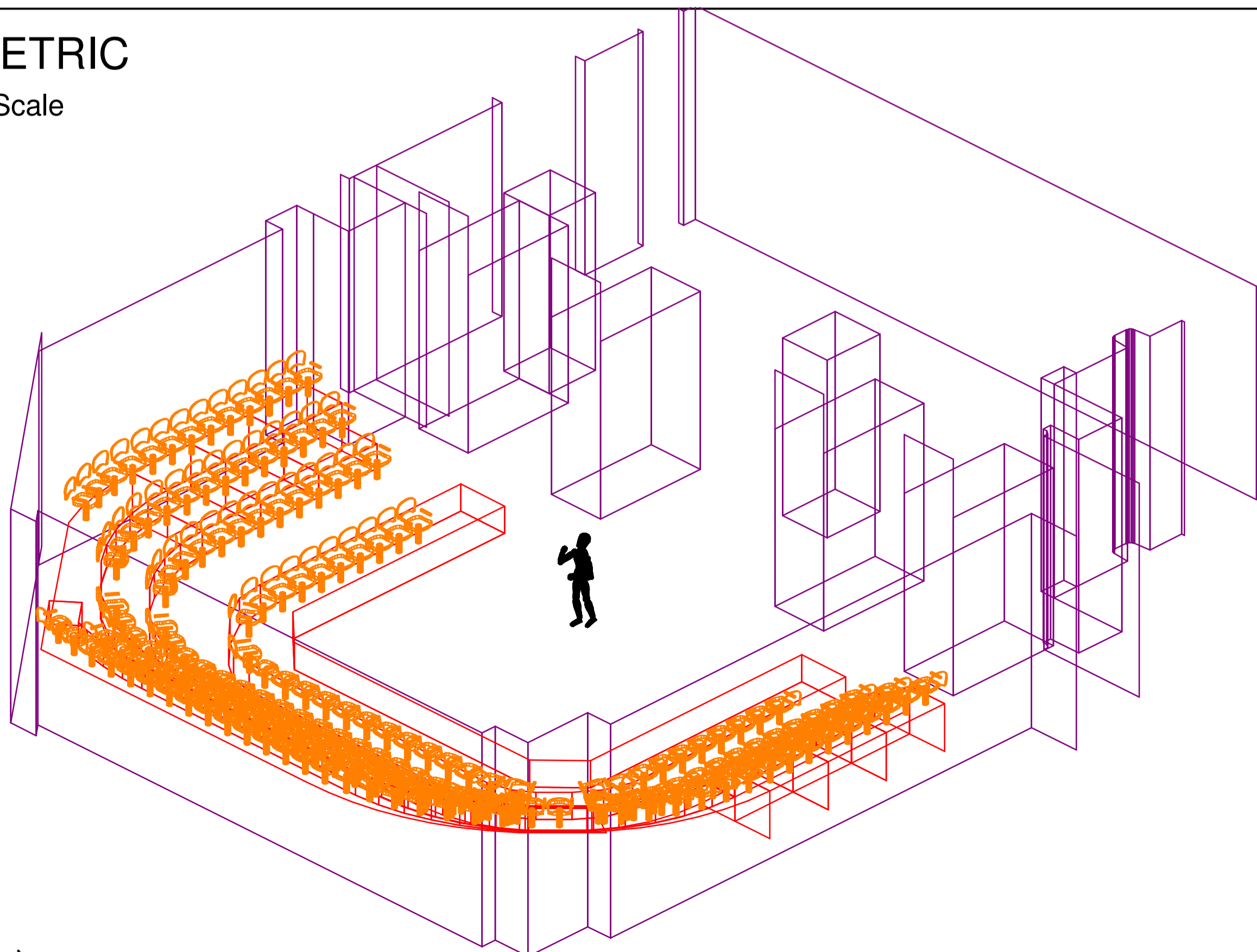
SECTION

Scale 1:75



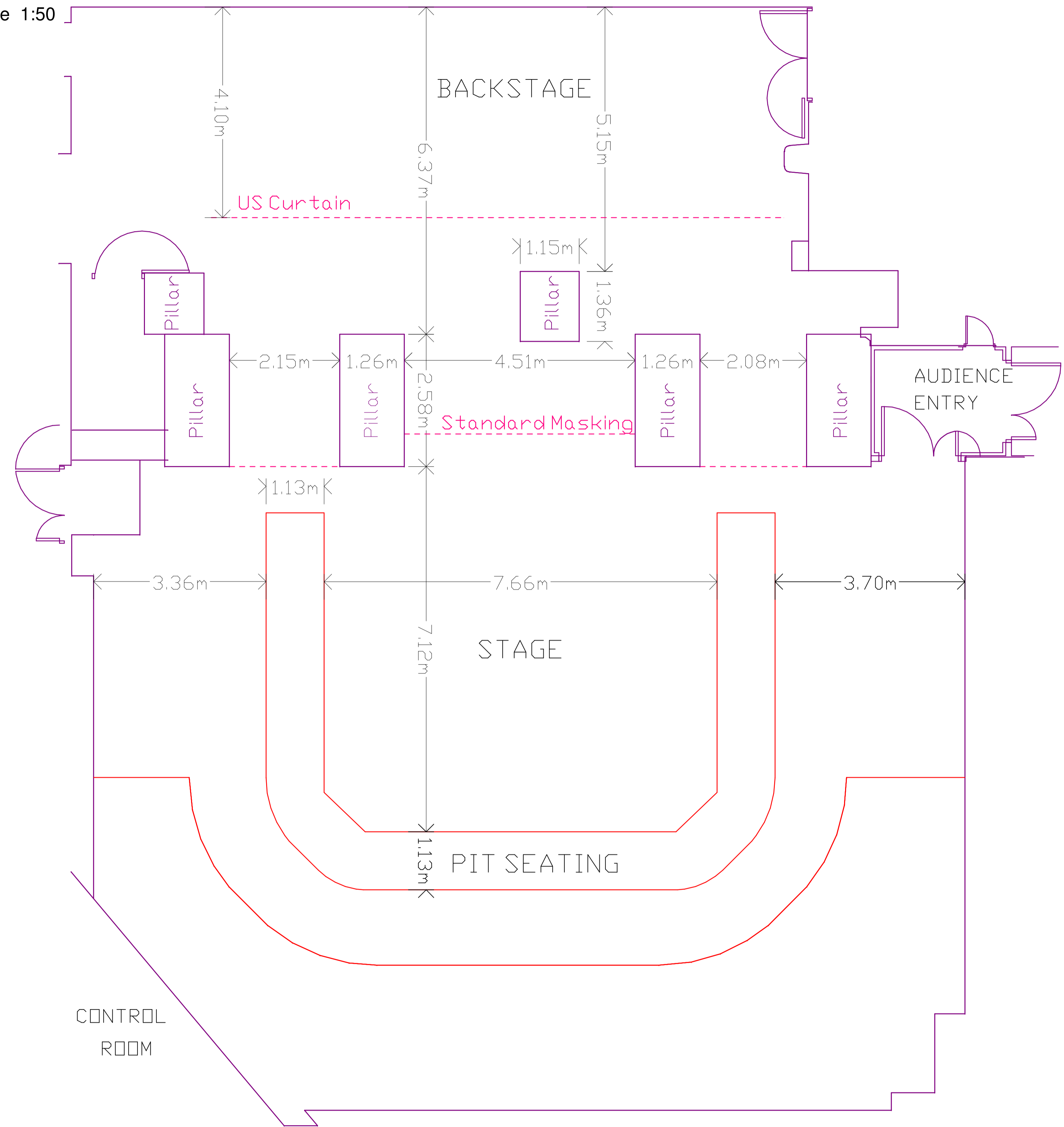
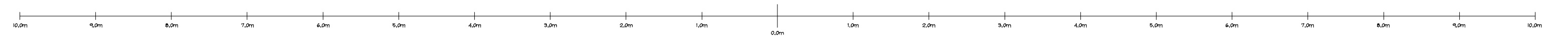
ISOMETRIC

Not to Scale



FLOOR PLAN

Scale 1:50



BRISBANE POWERHOUSE ARTS

Visy Theatre
Venue Plans - Floor

Scale: Scale Correct at A1
Printed: 3/10/2008
File: VISY THEATRE v1
VERSION 1.0